

Indiana Michigan Power Company (I&M) along with Indiana Michigan Transmission Company is improving the reliability of the electric transmission grid in northwest Indiana. Enhancements include substation improvements and rebuilding the existing transmission line between two area substations. The approximately \$26 million project improves reliability and strengthens the grid.



## WHAT

The project involves substation improvements and rebuilding approximately 9 miles of 345 kilovolt transmission line connecting the Meadow Lake and Reynolds substations.



## WHY

Electric demand in the area is straining the existing system. This project increases the performance of the transmission system and enhances power reliability. Improvements are mandated as part of PJM Interconnection, the region's transmission organization, to comply with federal requirements for adequate transmission infrastructure.



## WHERE

The Chalmers – Reynolds transmission line, located in White County, is one section of the longer Dequine – Olive transmission line.

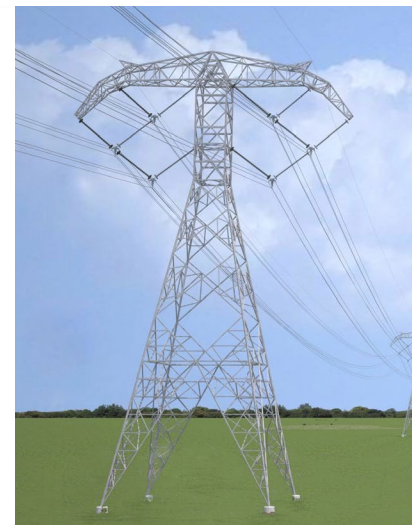


## Typical Structures\*

New lattice structures feature a BOLD (Breakthrough Overhead Line Design) that maximizes system performance while minimizing environmental impacts and overall system costs. The structures range between 122 and 140 feet in height and will be placed in the center of the existing right-of-way corridor. Current structures range between 150 and 167 feet in height. The shorter BOLD structures offer a high-efficiency solution to deliver power.

I&M is committed to meeting the energy needs of customers while protecting the environment and natural beauty of the region.

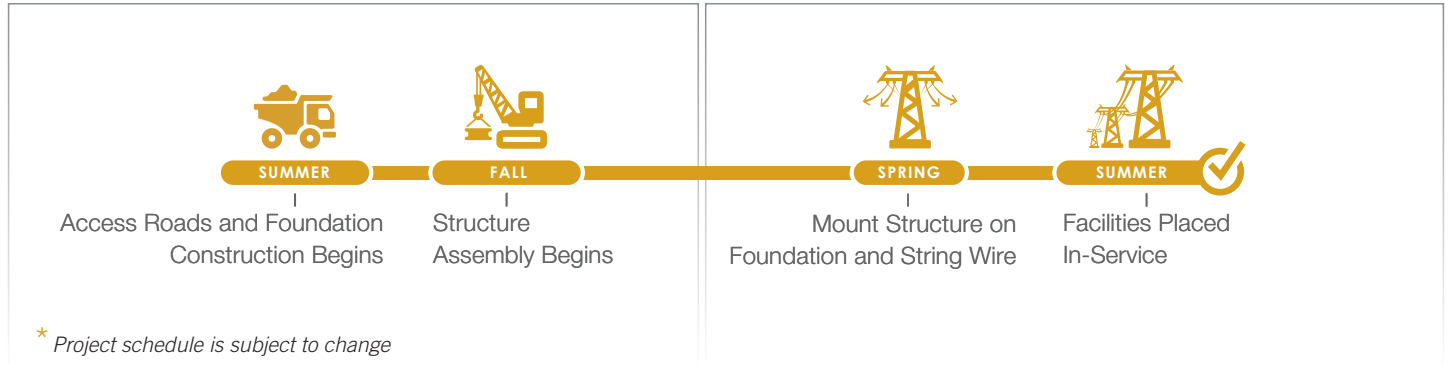
\*Exact structure and Right-Of-Way may vary



# Project Schedule\*

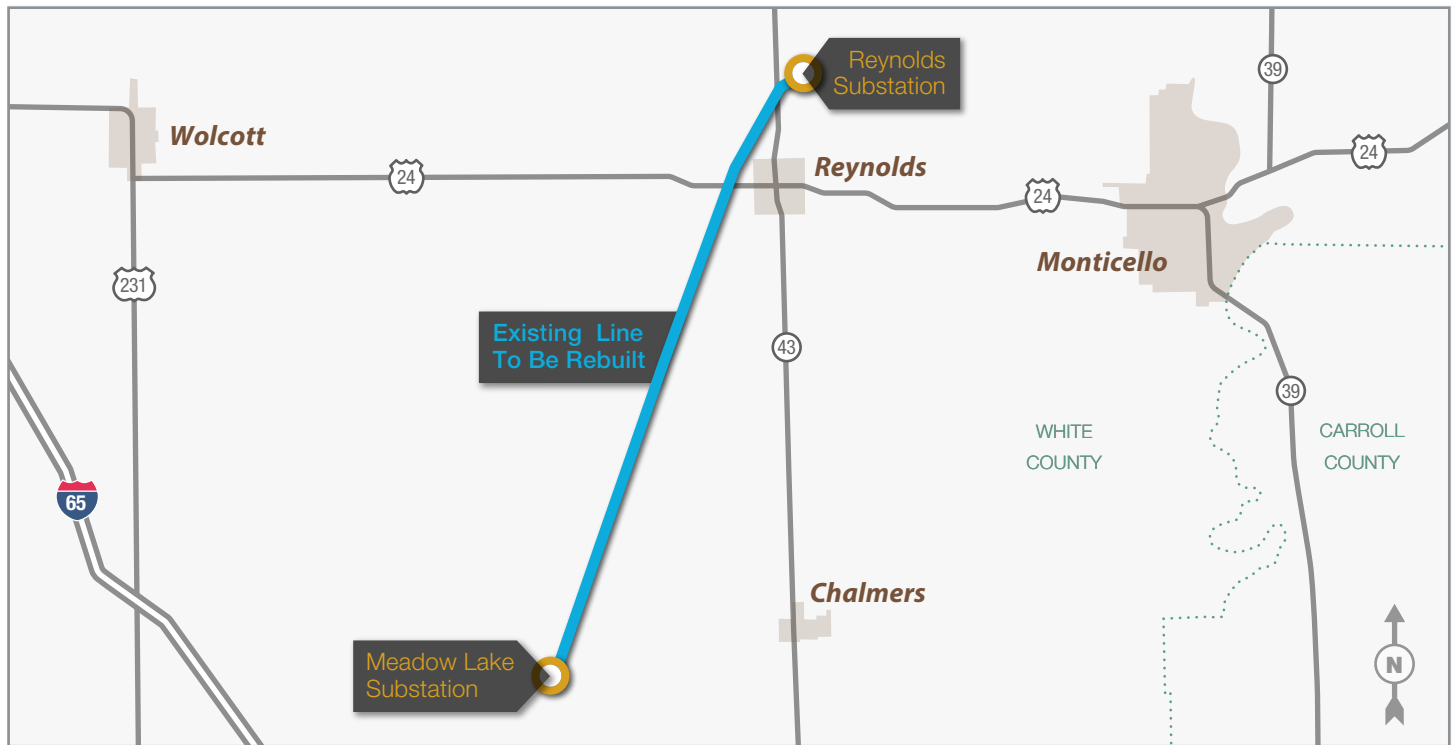
2016

2017



\* Project schedule is subject to change

# Project Map



I&M welcomes your feedback regarding the project. Please send comments and questions to:



Indiana Michigan Power  
c/o Maggie Beggs  
P.O. Box 60  
Fort Wayne, IN 46801



(260) 466-7929



A unit of American Electric Power